



# 2023 DODGE DURANGO



## SELECT FEATURES

- Air Conditioning with Tri-Zone Automatic Temperature Control
- Dodge Air Filtration System
- Audio Controls – Steering wheel-mounted
- Automatic Headlamps
- Auxiliary Power Outlet – 12-volt
- Battery – 650-amp on all but R/T; R/T has 700-amp maintenance-free with battery-saver feature
- Brakes – Four-wheel disc
  - Antilock with Electronic Brake-Force Distribution
- Console – Full-length floor and overhead with two lamps, sunglasses storage and available Universal Garage Door Opener controls
- Enhanced Accident Response System
- Floor Mats – Luxury, front and rear
- Premium LED Fog Lamps
- Front and Rear Interior LED Lamps
- Glass – Deep-tint sunscreen on rear doors, quarter-panel and liftgate
- Hill Start Assist
- Locks – Power

## SAFETY & SECURITY

- Adaptive Cruise Control (ACC) with Stop<sup>(2)</sup>
- Air Bags<sup>(21)</sup> – Advanced multistage driver’s and front-passenger, advanced side-curtain and supplemental front-seat side
- Blind Spot Monitoring (BSM)<sup>(5)</sup> and Rear Cross-Path Detection System<sup>(1)</sup>
- Child Seat Anchor System – Lower child-seat anchors and upper tether anchors help ease the installation of compatible aftermarket child seats
- Electronic Stability Control (ESC)<sup>(6)</sup> – With Electronic Roll Mitigation, All-Speed Traction Control, Brake Assist and four-wheel disc Antilock Brake System
- Full-Speed Forward Collision Warning Plus<sup>(8)</sup>
- LaneSense<sup>®</sup> Lane Departure Warning Plus<sup>(10)</sup> (Available)

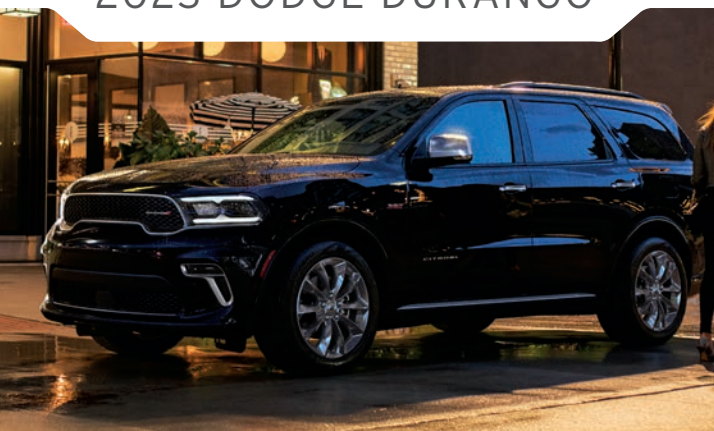
## AVAILABLE FLEET FEATURE

Uconnect<sup>®</sup> 5 NAV with 10.1-inch Display (Standard on SXT)

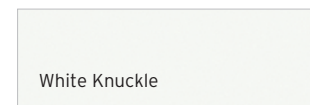
ENGINES	HORSEPOWER <sup>(22)</sup>	TORQUE <sup>(22)</sup>
3.6L Pentastar <sup>®</sup> V6	295 hp @ 6,400 rpm	260 lb-ft @ 4,000 rpm
5.7L HEMI <sup>®</sup> V8	360 hp @ 5,150 rpm	390 lb-ft @ 4,250 rpm



# 2023 DODGE DURANGO



## EXTERIOR PAINT COLORS



### EXTERIOR DIMENSIONS\*

Wheelbase	119.8
Overall Length	200.8
Overall Width (at mirrors)	85.5
Height (at antenna)	72.1
Ground Clearance	8.1
Approach Angle (deg)	18.5
Departure Angle (deg)	21.5
Breakover Angle (deg)	16.3
Front Track	63.9
Rear Track	64.1
Base Curb Weights (lb) – 3.6L Pentastar® V6 RWD/AWD	4,750 / 4,884
– 5.7L HEMI® V8 RWD/AWD	5,215 / 5,370

### TOWING<sup>(19)</sup>

Tow Class (max)	IV
Maximum Towing (lb) – 3.6L Pentastar V6 RWD/AWD	6,200
– 5.7L HEMI V8 RWD/AWD	7,400

### FUEL ECONOMY<sup>(18)</sup>

Fuel Economy (mpg)	City / Hwy
– 3.6L Pentastar V6 - RWD	19 / 26
– AWD	18 / 25
– 5.7L HEMI V8 - RWD	14 / 22
– AWD	14 / 22

### INTERIOR DIMENSIONS\*

First Row		
– Head Room		39.9
– Leg Room		40.3
– Shoulder Room		58.5
– Hip Room		57
Second Row		
– Head Room		39.8
– Leg Room		38.6
– Shoulder Room		57.7
– Hip Room		55.5
Third Row		
– Head Room		37.8
– Leg Room		33.5
– Shoulder Room		50.4
– Hip Room		42.4
Cargo Volume – Behind third row (cu ft)		17.2
– Behind second row (cu ft)		43.3
– Behind front row with rear seats folded (cu ft)		85.1
Seating Capacity (max occupants)		Up to 7
Fuel Tank Capacity (gal)		24.6

\*Based on 2022MY vehicle information. All dimensions are in inches unless otherwise noted.



# 2023 DODGE DURANGO

## STANDARD FEATURES AND OPTIONS

### CPOS PACKAGE

SXT	GT	R/T	Citadel
2TA	2TD	2TS	2TC

### ENGINES / TRANSMISSIONS

3.6L Pentastar® V6 Variable Valve Timing (VVT) (ERC) with 8-speed Automatic (DFT)	•	•	•
5.7L HEMI® V8 with Multi-Displacement System and VVT (EZH) with 8-speed Automatic (DFD)			•
			0

### MECHANICAL FEATURES / CAPABILITY

Brakes – Antilock four-wheel disc heavy-duty (BR6)	•	•	•	•
Exhaust System – Dual rear with Bright tips (included with Blacktop Package) (NEX)	P	•	•	•
Fuel Door – Power-locking	•	•	•	•
Fuel Tank – 24.6-gallon (NF4)	•	•	•	•
Steering – Performance (XX6)			•	
– Electric Power (SBL)	•	•	•	•
Suspensions – Eco Suspension III (SD2)	•	•		•
– Normal-duty (All-Wheel Drive (AWD) only) (SDA)	•	•		•
– Rear load-leveling (SES)	•	•	•	•
– Sport - Lowered ride height for enhanced handling (SDE)			•	
Transfer Case/AWD System – Single-speed, full-time AWD; includes MP310 transfer case (AWD models only) (DHY)	•	•		•
– Two-speed, active on-demand AWD (packaged with 5.7L HEMI V8; AWD models only) (DKA)			•	P

### EXTERIOR FEATURES

Fascias – Accent-color lower (MLX)	•			
– Body-color rear (ML9)		•	•	
– Platinum rear lower (ML7)				•
– Body-color upper (MBP)	•	•	•	•
– Body-color lower (packaged with SXT Blacktop Group) (MLB)	P	•	•	•
– Body-color/Accent-color rear (MBT)	•			
Grille – Chrome surround, Granite insert (MAH)	•			
– Black surround, molded-in-color insert (MAJ)		•	•	
– Gloss Black (packaged with SXT Blacktop Group) (MAK)	P			
– Platinum surround, Granite Crystal insert (MAL)	P			•
Liftgate – Power, with key fob, overhead console and rear cargo-area controls (JRC)		•	•	•
Liftgate Spoiler – Body-color; includes Center High-Mounted Stop Lamp (CHMSL)	•	•	•	•
Lighting – Auto High-Beam Headlamp Control (packaged with 2TH) (LMS)		P	•	•
– Automatic headlamps (ON/OFF) actuate when ambient light is at low levels; includes headlamps-on-with-wipers (LMG)	•	•	•	•
– LED low-/high-beam headlamps (LM6)	•	•	•	•

• = Standard. 0 = Optional. P = Available with Package noted. F = Fleet only.



# 2023 DODGE DURANGO

## STANDARD FEATURES AND OPTIONS

### CPOS PACKAGE

**SXT**      **GT**      **R/T**      **Citadel**  
**2TA**      **2TD**      **2TS**      **2TC**

### EXTERIOR FEATURES (CONTINUED)

Lighting (continued) – LED auxiliary low-beam and turn signal (packaged with 2TH) (LPU)		P	•	•
– Premium LED fog lamps (LTE)	•	•	•	•
– LED daytime running lamps (DRLs) (LMZ)	•	•	•	•
Mirrors – Platinum, power-folding multifunction with memory, heating element, auto-dimming for driver's side and supplemental turn signals (GUN/LEM/LE2/LEB/NHJ/GNZ)				•
– Body-color, power, manual foldaway with heating element (NHJ/GTS/LEP)	•	•		
– Body-color, power-folding multifunction with heating element, auto-dimming driver's-side mirror, supplemental turn signals and memory (packaged with 2TH) (GUN/LEM/GNZ/NHJ/LEB/LEP)		P	•	
– Gloss Black, power-folding multifunction with heating element, auto-dimming driver's-side mirror, supplemental turn signals and memory (included with SXT Blacktop Group and Blacktop Package) (GUN/LEM/GNZ/NHJ/LEB/LE7)	P	P	P	
Remote Start <sup>(12)</sup> System – Control integrated into key fob, radio frequency system with 300-ft range (XBM)		•	•	•
Roof Rails – Bright side, with integrated, storable crossrails (MW1/MXQ)	•			
– Black side, with integrated, storable crossrails (included with SXT Blacktop Group, Blacktop Package, 2TH and 2TU) (MWE/MXQ)	P	P	P	•
Sunroof – Power with express-open/close and comfort-stop features (included with SXT Blacktop Group, 2TG, 2TH, 2TT and 2TU) (GWA)	P	P	O/P	•
Tires – P265/60R18 BSW All-Season (A/S) LRR (TDC)	•			
– P265/50R20 BSW A/S LRR (packaged with SXT Blacktop Group) (TKJ)	P	•	•	•
– P265/50R20 Performance A/S (included with 2TG, 2TH, 2TT and 2TU if Blacktop Package is optioned) (TKY)		P	P	
– 295/45ZR20 BSW A/S (included with Tow N Go Package on All-Wheel Drive (AWD) models) (TWE)			P	
Wheel Lip Moldings – Accent-color (MRD)	•			
– Body-color (packaged with SXT Blacktop Group) (MML)	P	•	•	•
Wheels – 18-inch painted aluminum (WP1)	•			
– 20-inch Fine Silver (WHJ)		•	•	
– 20-inch Black Noise aluminum (included with SXT Blacktop Group and Blacktop Package) (WH4)	P	P	P	
– 20-inch Hyper Black aluminum (included with Tow N Go Package) (WHW)			P	
– 20-inch Lights Out aluminum (WHE)			P	
– 20-inch Satin Carbon (WHT)	P			•
Wiper System – Front, speed-sensitive, variable/intermittent with 1-gallon fluid capacity (JHA)	•	•		
– Rear, with fixed intermittent and continuous speeds, with washer (JHB)	•	•	•	•
– Rain-sensitive windshield (packaged with 2TH) (JHC)		P	•	•

### INTERIOR FEATURES

7-inch Thin Film Transistor Reconfigurable Digital Gauge Cluster – Includes custom programmable features (JAJ)	•	•	•	•
Air Conditioning – Rear air conditioning with headliner vents and rear-seat controls (HBB)	•	•	•	•
– Three-Zone automatic temperature control; includes infrared sensors and rear-seat outlets (HAH)	•	•	•	•
Dodge Air Filtration System (JMA)	•	•	•	•

• = Standard. O = Optional. P = Available with Package noted. F = Fleet only.



# 2023 DODGE DURANGO

## STANDARD FEATURES AND OPTIONS

### CPOS PACKAGE

### INTERIOR FEATURES (CONTINUED)

	SXT 2TA	GT 2TD	R/T 2TS	Citadel 2TC
Cargo Area – Bright scuff plates (packaged with 2TH) (CTB)		P	•	•
– Cargo compartment cover (included with 2TH and 2TU) (CSC)	F	P	P	•
– Carpeted; includes storage tray and cargo tie-down loops in floor, driver’s-side storage bin and 12-volt auxiliary power outlet (CKN/CKT/JJM)	•	•	•	•
– Covered cargo storage (CLG)	•	•	•	•
Console – Full-length front floor console with two illuminated cup holders, two-tier armrest storage with interior 12-volt power outlet and LED-illuminated USB connection (if equipped), console lid tissue holder, and storage tray with anodized shifter bezel; rear of console features air conditioning vent controls, rear-seat heat controls (if equipped) and video jacks (if equipped) (CUF)	•	•	•	•
– Second-row mini floor console with cup holders and storage; also includes a floor mat for the third row (packaged with second-row Fold-and-Tumble Captain’s Chairs) (CUM)		P	P	
– Overhead front console with two LED map lamps, two dome lamps, sunglasses storage bin, Universal Garage Door Opener control switches (if equipped) and power sunroof/sunshade controls (if equipped) (CUN)	•	•	•	•
– Second-row floor console with armrest, covered storage, illuminated cup holders, 12-volt auxiliary outlet and USB charging port; also includes a floor mat for the third row (requires second-row Fold-and-Tumble Captain’s Chairs (CFU); packaged with 2TF) (CVR/JJJ/CXB/RS3)		O	O/P	•
– Leather-wrapped armrest, center console (packaged with leather-trimmed bucket seats) (CMH)		P	P	•
Floor Mats – Luxury front and rear (CLX)	•	•	•	•
– Third-row, bench seat mat (CWD)		•	•	
– Third-row, full console mat (packaged with second-row console) (CCE)				P
– Third-row, mini console mat (packaged with second-row mini console) (CCF)		P	P	
Lighting – Glove box lamp, front LED map lamps, second-row aimable LED map lamps, courtesy door lamps, overhead console/rear-passenger overhead reading/courtesy lamps, cargo compartment lamp, Sapphire Blue interior switch lighting, and Sapphire Blue ambient LED lighting for front-door inside handles and map pockets (LBC/LBR)	•	•	•	•
Memory System – Radio station presets, last station settings, driver’s-seat position and exterior mirrors (packaged with 2TG and 2TH); actuated from driver’s door panel or each unique key fob (LEW)		P	•	•
Mirrors – Rearview, auto-dimming (GNK)	•	•	•	•
Seats – Cloth bucket in Black (*C5)	•	•	•	
– Leather-trimmed/suede in Black (*ZL)		O	O	
– Leather-trimmed bucket with R/T logo and Red accent stitching (packaged with 2TF; available in Black; includes embroidered Rhombus logo) (*EC)			P	
– Nappa leather-trimmed with Nappa Axis II perforated inserts and Silver accent stitching; available in Black, Black/Ebony Red or Black/Vitra Gray (packaged with 2TG, 2TH, 2TT and 2TU) (*ML)		P	P	•
– First-row, power eight-way driver’s with memory (JPR)	•	•		
– First-row, passenger forward fold-flat (not available with leather-trimmed seats on GT) (CDW)	•	•		

• = Standard. O = Optional. P = Available with Package noted. F = Fleet only.





# 2023 DODGE DURANGO

## STANDARD FEATURES AND OPTIONS

### CPOS PACKAGE

SXT

GT

R/T

Citadel

2TA

2TD

2TS

2TC

### INTERIOR FEATURES (CONTINUED)

Seats (continued) – First-row, power four-way driver's lumbar-adjust (JPU)

•

•

– First-row, power four-way driver's and passenger lumbar-adjust (packaged with 2TG and 2TH) (JRN)

P

•

•

– First-row, power eight-way driver's and passenger; driver's includes memory feature (packaged with leather-trimmed seats) (JT2)

P

•

•

– First-row, heated (JPM)

•

•

•

– First-row, ventilated (included with leather-trimmed bucket seats) (CAJ)

P

P

•

– Second-row, 60/40 Fold-and-Tumble three-passenger bench (CFF)

•

•

•

– Second-row, heated (packaged with 2TG and 2TH) (JPZ)

P

•

•

– Second-row, Fold-and-Tumble Captain's Chairs; includes second-row, seat-mounted inboard armrests (packaged with 2TF on R/T) (CFU/CSL)

O

O/P

•

– Third-row, 50/50 split-folding; includes head restraints<sup>(25)</sup> which can be folded down electronically from a switch on the instrument-panel center stack (CFP)

•

•

•

•

Steering Wheel – Heated (NHS)

•

•

•

– Perforated leather-wrapped, with controls for audio, speed, Electronic Vehicle Information Center (EVIC) voice-recognition and Adaptive Cruise Control (ACC) with Stop<sup>(2)</sup> (SCJ)

•

•

– Power tilt/telescoping steering column (packaged with 2TH) (SUB)

P

•

•

– Tilt/telescoping steering column (SUD)

•

•

### UCONNECT® MULTIMEDIA

Media Hub – Includes two USB ports and auxiliary jack (RSF)

•

•

•

•

– One USB charging port, located inside center console (RS3)

•

Power Outlets – 12-volt in console (JJJ)

•

– Two 12-volt, located on the instrument panel and in the rear cargo compartment (JKP/JJM)

•

•

•

•

– 115-volt auxiliary (packaged with 2TH) (JKV)

P

•

•

Radios – Uconnect 4 with 8.4-inch display (UAM)

•

– Uconnect 5 NAV with 10.1-inch display (UBN)

F

•

•

•

SiriusXM® Radio<sup>(13)</sup> – Includes six-month trial subscription (RSD)

•

•

•

•

Speakers – Nine Alpine® amplified speakers, subwoofer and 506-watt amplifier (packaged with 2TH) (RC3)

P

•

– 19 Harman Kardon® speakers, high-performance audio system (included with 2TU) (RCA)

P

•

– Six speakers (RCG)

•

•

USB Port – Dual remote ports, charging only (packaged with 2TH) (RS4)

P

•

•

### SAFETY & SECURITY

ACC with Stop<sup>(2)</sup> (NH3)

•

•

•

•

Advanced Brake Assist (included with 2TU on R/T and 2TH on GT) (BGG)

P

P

•

• = Standard. O = Optional. P = Available with Package noted. F = Fleet only.



# 2023 DODGE DURANGO

## STANDARD FEATURES AND OPTIONS

### CPOS PACKAGE

### SAFETY & SECURITY (CONTINUED)

	SXT	GT	R/T	Citadel
	2TA	2TD	2TS	2TC
Air Bags <sup>(21)</sup> – Advanced multistage, driver's and front-passenger (CG3)	•	•	•	•
– Supplemental side-curtain (all rows) (CJ5)	•	•	•	•
– Supplemental side (CGS)	•	•	•	•
– Driver's inflatable knee bolster (CGY)	•	•	•	•
– Supplemental front-seat side (CJ1)	•	•	•	•
Blind Spot Monitoring (BSM) <sup>(5)</sup> and Rear Cross-Path Detection System <sup>(1)</sup> (XAN)	•	•	•	•
Electronic Stability Control (ESC) <sup>(6)</sup> – Includes Vehicle Stability Management System, Electronic Roll Mitigation, All-Speed Traction Control, Brake Assist and four-channel Antilock Brake System (BNB/BNR)	•	•	•	•
Full-Speed Forward Collision Warning Plus <sup>(8)</sup> (LSU)	•	•	•	•
Hill Start Assist – Prevents vehicle from rolling back for two seconds when starting vehicle on an incline (BNG)	•	•	•	•
Keyless Enter 'n Go™ – Push-button ignition system with proximity entry: driver can leave the key fob in pocket or purse; the doors are unlocked by touching the exterior door handle, and the vehicle will start with the push of a button on the instrument panel when the brake pedal is depressed (GX4)	•	•	•	•
LaneSense® Lane Departure Warning Plus <sup>(10)</sup> (included with 2TU on R/T and 2TH on GT) (LAS)		P	P	•
ParkSense® Rear Park Assist System <sup>(11)</sup> – Sensors in rear bumper detect obstacles; includes shut-off switch (XH3)	•	•	•	•
ParkView® Rear Back-Up Camera <sup>(1)</sup> – Rear-mounted camera with display in vehicle, activated when vehicle is shifted into Reverse (XAC)	•	•	•	•
Rain Brake Support (BHC)	•	•	•	•
Ready Alert Braking (BHD)	•	•	•	•
Security Alarm <sup>(24)</sup> (packaged with 2TH) (LSA)		P	•	•
Sentry Key® Antitheft Engine Immobilizer (GXX)	•	•	•	•
Trailer Sway Control <sup>(6)</sup> (BNT)	•	•	•	•
Universal Garage Door Opener (packaged with 2TH) (XGD)		P	•	•

### PACKAGES/EQUIPMENT GROUPS

SXT Plus Package – Includes power sunroof, Full-Speed Forward Collision Warning Plus <sup>(8)</sup> and Adaptive Cruise Control (ACC) with Stop <sup>(2)</sup>	O			
GT Plus and R/T Plus Package – Includes power sunroof, 10.1-inch flush-mounted radio with premium navigation (Standard on R/T), Alpine® premium audio system with nine speakers and subwoofer, LED fog lamps, LED auxiliary low-beam lighting, LED amber turn signal, Nappa leather-trimmed seats, 12-way power driver's and passenger seats, power tilt/telescoping steering column, heated first- and second-row seats, ventilated first-row seats, memory settings, Full-Speed Forward Collision Warning Plus, <sup>(8)</sup> ACC with Stop, <sup>(2)</sup> wireless Apple CarPlay, <sup>TM(4)</sup> Android Auto <sup>TM(3)</sup> and Trailer Tow Group IV		O	O	

• = Standard. O = Optional. P = Available with Package noted. F = Fleet only.



# 2023 DODGE DURANGO

## STANDARD FEATURES AND OPTIONS

### CPOS PACKAGE

SXT

GT

R/T

Citadel

2TA

2TD

2TS

2TC

### PACKAGES/EQUIPMENT GROUPS (CONTINUED)

SXT Blacktop Group – Includes Black roof rails, Gloss Black exterior mirrors and badges, power sunroof, Satin Black Dodge taillamp badge, Black headlamp bezels, Body-color wheel lip molding/lower fascia/sill molding/rear fascia, Gloss Black grille with Granite inner, Body-color shark fin antenna, 265/50R20 BSW All-Season (A/S) LRR tires and 20-inch Black Noise aluminum wheels (ADJ)

0

Blacktop Package – Includes Black roof rails, Gloss Black exterior mirrors, Gloss Black badging and Satin Black Dodge taillamp badge (for GT, add Performance hood) (ADX)

0

0

Mopar® All-Weather Package – Includes Mopar Cargo Net, Mopar Front and Rear Door Entry Guards, and Mopar Slush Mats (AAW)

0

0

0

0

Tow N Go Package – Includes Red Brembo® brakes, SRT® perforated pad, Quadra-Trac® Active On-Demand Four-Wheel Drive (4WD), Electronic Limited-Slip Differential rear axle, high-performance exhaust, drive modes - Sport/Track/Tow/Snow, Active Noise Control System, 160-mph primary speedometer, 145-mph maximum speed calibration, Automatic Headlamp Leveling System, Body-color upper/lower rear fascia, Adaptive Damping, Performance-tuned steering, high-performance suspension, run-flat tires, compact spare tire, 295/45ZR20 BSW A/S tires and 20-inch Hyper Black aluminum wheels (All-Wheel Drive (AWD) R/T models only) (AAN)

0

Trailer Tow Group IV – Includes integrated trailer brake controller, HD cooling (Standard on SRT), rear load-leveling suspension (Standard on Rear-Wheel Drive (RWD) vehicles), full-size spare tire (compact spare tire on SRT), Class IV hitch receiver and two-speed transfer case (5.7L AWD vehicles)

0

0

• = Standard. 0 = Optional. P = Available with Package noted. F = Fleet only.





# FLEET & BUSINESS SOLUTIONS

(1) Always check entire surroundings visually before backing up. (2) This system is a driver convenience system, not a substitute for active driver involvement. The driver must remain aware of traffic conditions and be prepared to use the brakes to avoid collisions. (3) To use Android Auto on your phone screen, you'll need an Android phone running 6 or higher and the Android Auto App. Android and Android Auto are trademarks of Google LLC. (4) Requires compatible iPhone. See dealer for phone compatibility. Data plan rates apply. Vehicle user interface is a product of Apple. Apple CarPlay is a trademark of Apple Inc. iPhone is a trademark of Apple Inc., registered in the US and other countries. Apple terms of use and privacy statements apply. (5) Always check entire surroundings visually before proceeding. (6) Always drive carefully, consistent with conditions. Always wear your seat belt and obey traffic laws. (7) This system is solely an alert system for the front of the vehicle that does not take any actions to change vehicle dynamics to avoid a collision, not a substitute for active driver involvement. The driver must remain aware of traffic conditions and be prepared to use the brakes to avoid collisions. (8) This system is an alert system for the front of the vehicle. It is not a substitute for active driver involvement. The driver must remain aware of traffic conditions and be prepared to use the brakes to avoid collisions. (9) HAS requires the driver to keep his or her hands on the steering wheel at all times. This system is a driver convenience system, not a substitute for active driver involvement. The driver must remain aware of traffic conditions and maintain control of the vehicle. (10) This system is a driver convenience system, not a substitute for active driver involvement. The driver must remain aware of traffic conditions and maintain control of the vehicle. (11) Always look before proceeding. An electronic drive aid is not a substitute for conscientious driving. Always be aware of your surroundings. (12) Check state and local laws regarding the use of remote start systems. (13) Your service will automatically stop at the end of your trial subscription unless you decide to continue service. If you do not wish to enjoy your trial subscription, you can cancel it by calling the number below. **If you decide to continue service after your trial subscription, the subscription plan you choose will automatically renew thereafter and you will be charged according to your chosen payment method at then-current rates. Fees and taxes apply. Please see our Customer Agreement at [www.siriusxm.com](http://www.siriusxm.com) for complete terms and how to cancel, which includes calling us at 1-866-635-2349.** All fees, content and features are subject to change. (14) All SiriusXM Guardian equipped vehicles come with a 12-month trial effective on the date of purchase or lease of a new vehicle. Enrollment in the trial is required to receive service. Upon expiration of the trial period, purchase of a subscription is required to continue SiriusXM Guardian. SiriusXM Guardian is available only on equipped vehicles purchased within the United States and Puerto Rico. Services can only be used where cellular coverage is available. See Uconnect and SiriusXM Guardian Terms of Service for complete service limitations. (15) Traffic Sign Recognition is not a substitute for safe and attentive driving. Factors including weather and condition of the traffic sign can impact recognition and display of the sign. Always check traffic signs visually while driving. (16) The Uconnect Phone requires a mobile phone equipped with the Bluetooth Hands-Free Profile. To check phone compatibility, please visit [www.UconnectPhone.com](http://www.UconnectPhone.com). (17) Vehicle must be in an active and usable cellular range and properly equipped with a Uconnect 5 or Uconnect 5 NAV system and Rear-Seat Entertainment Package. Requires a Wi-Fi data plan and linked Amazon account to run Amazon Fire TV in the vehicle. Streaming service subscriptions are not included. (18) Based on manufacturer's estimates – actual mileage may vary. (19) When properly equipped. See dealer for details. (20) Only available in Texas. (21) Always sit properly in designated seating positions with seat belts fastened at all times. (22) Based on 2022 model-year specifications. (23) Voice Text Reply and Voice Texting features require a compatible mobile device enabled with Bluetooth Message Access Profile (MAP). iPhone and some other smartphones do not currently support Bluetooth MAP. Visit [www.UconnectPhone.com](http://www.UconnectPhone.com) for system and device compatibility. Ensure MAP is ON and incoming message notification is enabled. Vehicle must be registered for Uconnect Access and you must fulfill minimum subscription requirements. Also requires the use of a compatible smartphone that supports text messaging and Bluetooth. Check [www.UconnectPhone.com](http://www.UconnectPhone.com) for device compatibility. (24) Vehicle must be locked and system activated for alarm to sound. (25) Always sit properly with the head restraint properly adjusted. Never place anything in front of the head restraint. (26) Based on EPA-estimated 82 MPG and 30 MPG combined. Actual mileage may vary. (27) Always be aware of your surroundings, and drive carefully, consistent with conditions. (28) Do not attempt water fording unless depth is known and consistent with the vehicle's water fording rating in the Owner's Manual. Traversing water can cause damage that may not be covered by the new vehicle warranty. Always off-road responsibly in approved areas. (29) Available on properly equipped vehicles with a Uconnect 5C/5C NAV system. Requires a Wi-Fi Hotspot plan and linked Amazon account to run Alexa in the vehicle. (30) Based on EPA-estimated all-electric 0 - 32-mile rating with fully charged battery. Actual mileage may vary. (31) Based on EPA-estimated 520-mile total range estimate. Actual mileage may vary.

©2022 FCA US LLC. All Rights Reserved. Chrysler, Dodge, Jeep, Ram, Wagoneer, HEMI, Mopar, SRT, the Chrysler wing badge, the Jeep grille, the Jeep grille, the Ram's Head logo, AllSecure, Big Horn, Challenger, Charger, Charger Pursuit, Citadel, Command-Trac, CommandView, Compass, Durango, Grand Cherokee, Grand Cherokee Summit, LaneSense, Laramie, Laredo, Latitude, Limited Longhorn, Mega Cab, Mojave, Overland, Pacifica, ParkSense, ParkView, Pentastar, Power Wagon, Quad Cab, Quadra-Drive, Quadra-Lift, Quadra-Trac I, Quadra-Trac II, R/T, Ram 1500 Express, Ram 1500 Classic Warlock, Ram ArticulinK, Ram ProMaster, Ram ProMaster City, RamBox, Rebel, Renegade, Rock-Trac, Rubicon, Sahara, Selec-Speed, Selec-Terrain, Selec-Trac, Sentry Key, Stow 'n Go, Stow N Place, Stow 'n Vac, SXT, Tigershark, TorqueFlite, Tradesman, Trail Rated, Trailhawk, Tru-Lok, Uconnect, Voyager, Warlock, Willys and Wrangler are registered trademarks and Active-Level, Gladiator, Keyless Enter 'n Go, Limited Longhorn, Pinnacle, Ram Telematics, SafetyTec and Trail Rail are trademarks of FCA US LLC. FIAT is a registered trademark of FCA Group Marketing S.p.A., used under license by FCA US LLC. MultiAir is a registered trademark of C.R.F. Società Consortile per Azioni, used under license by FCA US LLC. All product specifications are based on authorized information as of 4/29/2022. Photographs within this piece are for representation purposes only. Vehicle features listed are not all standard.

AISIN is a registered trademark of Aisin Seiki Co., Ltd. Alpine and the Alpine logo are registered trademarks of Alpine Electronics, Inc. All rights reserved. Amazon Fire TV is a registered trademark of Amazon.com Inc. Android, Android Auto, Google Play, Google+, YouTube, and other related marks and logos are trademarks of Google LLC. Apple, iPhone and Siri are registered trademarks and Apple CarPlay is a trademark of Apple Inc., used under license by FCA US LLC. Bilstein is a registered trademark of August-Bilstein GmbH & Co. Bluetooth is a registered trademark owned by Bluetooth SIG, Inc. Blu-ray Disc is a registered trademark and Blu-ray is a trademark owned by Blu-ray Disc Association. Brembo is a registered trademark of Brembo SpA. Bridgestone and any Bridgestone products or service names are trademarks or registered trademarks of Bridgestone Corporation. Case is a registered trademark of CNH Industrial America LLC. Cummins is a registered trademark of Cummins, Inc. Dana is a registered trademark of Dana Corporation. Dr. Dre, Beats and the b logo are trademarks of Beats Electronics, LLC. Facebook and logo are registered trademarks of Meta Platforms, Inc. Falken is a registered trademark of Sumitomo Rubber Industries, Ltd. Firestone is a registered trademark of Bridgestone Americas Tire Operations, LLC. FOX is a registered trademark of Fox Factory, Inc. Garmin is a registered trademark of Garmin Ltd. or its subsidiaries, registered in the U.S.A. and other countries. Goodyear and DuraTrac are registered trademarks of The Goodyear Tire & Rubber Company. Gorilla Glass is a registered trademark of Corning Incorporated. Harman Kardon is a registered trademark of Harman International Industries, Inc. Instagram is a registered trademark of Instagram, Inc. Katzkin and the Katzkin logo are registered trademarks of Katzkin Leather Interiors, Inc. KONI is a registered trademark of KONI North America. LinkedIn, the LinkedIn logo, the IN logo and InMail are registered trademarks or trademarks of LinkedIn Corporation and its affiliates in the United States and/or other countries. MAGNETI MARELLI is a trademark of Magneti Marelli S.p.A. McIntosh is a registered trademark of McIntosh Laboratory, Inc. SiriusXM Connected Vehicles Services Inc., Sirius, XM, SiriusXM, SiriusXM Guardian, and all related marks and logos are trademarks of SiriusXM Radio Inc. Sunrider is a registered trademark of Bestop, Inc. "TomTom" is a registered trademark of TomTom International BV. All our trademarks, service marks, trade names and trade dress are valuable assets owned by TomTom and are essential to protecting our brand identity. Torx is a registered trademark of the Camcar Corporation, division of Textron Industries. The Twitter name, logo, Twitter T, Tweet and Twitter bird are service marks of Twitter, Inc. in the United States and other countries. WARN is a registered trademark of Warn Industries, Inc.

